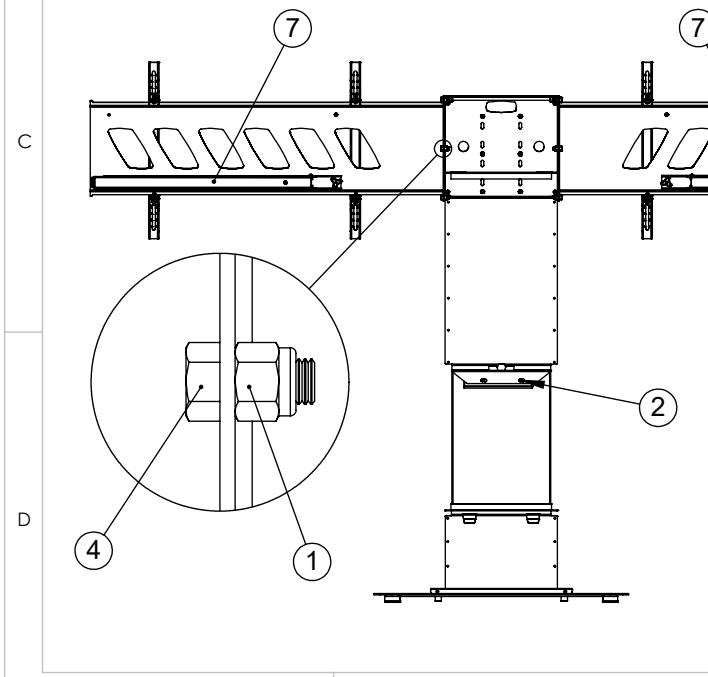


BOM Table			
NO	Part Number	Description	QTY.
1	NN-MET-12-HT-CZN	Nyloc (Nylon Insert) Nuts M12 (High Tensile Bright Zinc Plated Clear Passivated)	10
2	HMS-MET-6X16-HT-BO	Hex Machine Screw M6 X 16 (High Tensile Black Oxide)	2
3	HMS-MET-12X35-HT-BO	Hex Machine Screw M12 X 35 (High Tensile Black Oxide)	4
4	HMS-MET-12X25-HT-CZN	Hex Machine Screw M12 X 25 (High Tensile Bright Zinc Plated Clear Passivated)	10
5	Ass--20025139	Pzx9 - Pozimount End Arm Type 9	4
6	ASS--20056000	Twin screen bolt down base cover assembly	1
7	ASS--20055972	Side by Side Rhobus screen steady	2
8	ASS--20055819	Twin 86 inch screens side by side single free standing base	1
9	ASS--20055814	Twin screen Rhobus mast assembly	1
10	ASS--20055802	Twin screen Rhobus PZX9 Side assembly	1
11	ASS--20055801	Twin screen Rhobus PZX9 Side assembly	1



Description		Twin screen Rhobus single mast free standing	
UNLESS OTHERWISE SPECIFIED: DIMENSIONS ARE IN MILLIMETERS	Created Date: 20 January 2024	DRW - REV REV - A-007	See Below - Special Notes
	Created Date: 20 January 2024		
SURFACE FINISH: Powder Coated	Created By: Tim Smith	Material:	Part Number & Part Revision ASS--20055797 REV - A-007
	Unicol Engineering Green Road Oxford OX3 8EU		
WEIGHT: 153.83		Kg	SCALE:1:30 DO NOT SCALE DRAWING SHEET 1 OF 1